

STANDARD ARRIVAL CHART-INSTRUMENT

RJTT / TOKYO INTL

RNAV STAR RWY22/23

POLIX 1S ARRIVAL
POLIX 1D ARRIVAL

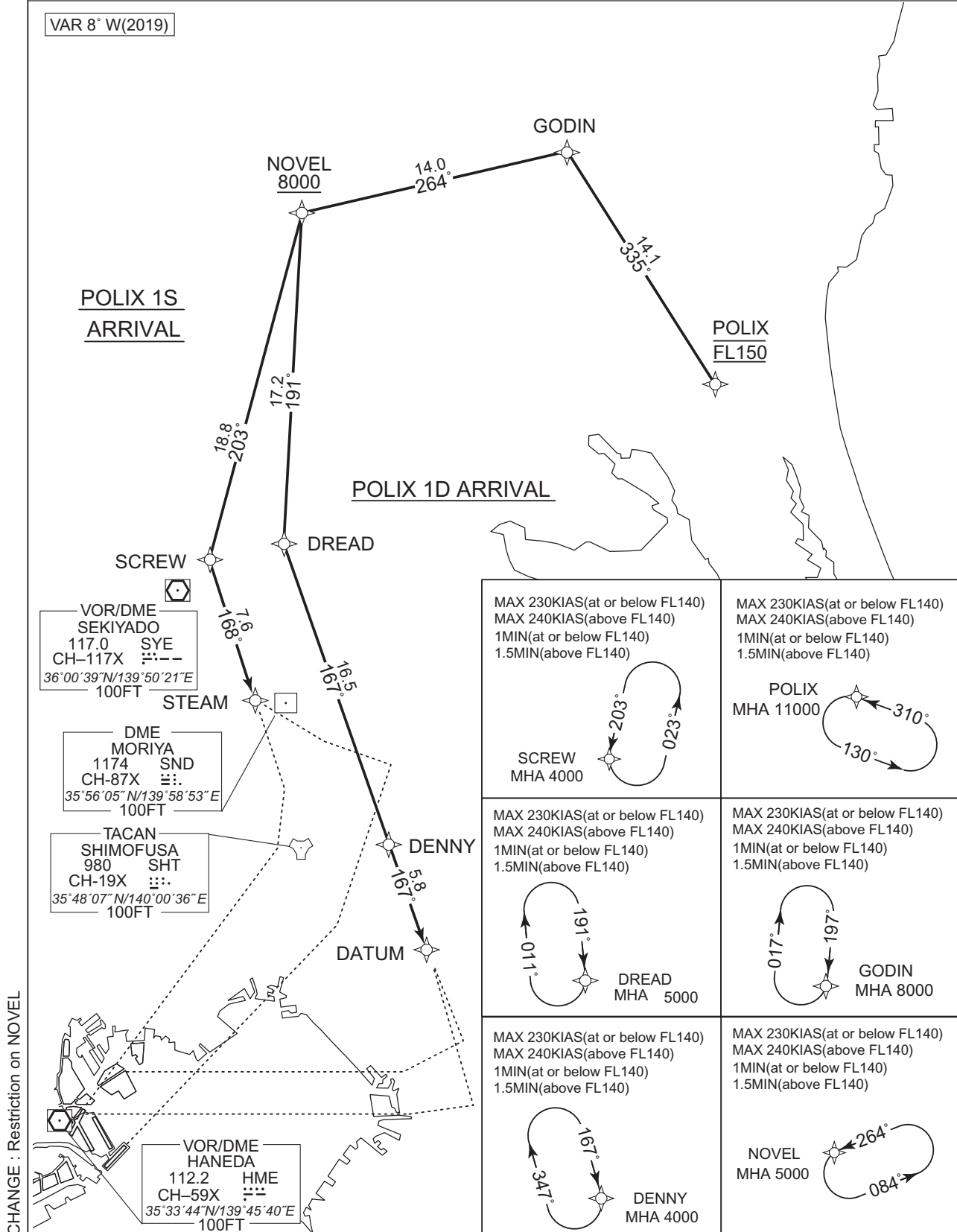
RNAV 1

Note 1) DME/DME/IRU or GNSS required.
2) RADAR service required.

VAR 8° W(2019)

POLIX 1S
ARRIVAL

POLIX 1D
ARRIVAL



CHANGE : Restriction on NOVEL

STANDARD ARRIVAL CHART-INSTRUMENT

RJTT / TOKYO INTL

RNAV STAR RWY22/23

POLIX 1S ARRIVAL

From POLIX at FL150, to GODIN, to NOVEL at or above 8000FT, to SCREW, to STEAM.

Critical DME	-
DME GAP	-
Inappropriate Nav aids	See AD1.1.6.10.3. Inappropriate NAVAIDs for RNAV1

Serial Number	Path Descriptor	Waypoint Identifier	Fly Over	Course °M(°T)	Magnetic Variation	Distance (NM)	Turn Direction	Altitude (FT)	Speed (KIAS)	Vertical Angle	Navigation Specification
001	IF	POLIX	-	-	-7.5	-	-	FL150	-	-	RNAV1
002	TF	GODIN	-	335 (327.2)	-7.5	14.1	-	-	-	-	RNAV1
003	TF	NOVEL	-	264 (256.4)	-7.5	14.0	-	+8000	-	-	RNAV1
004	TF	SCREW	-	203 (195.2)	-7.5	18.8	-	-	-	-	RNAV1
005	TF	STEAM	-	168 (160.4)	-7.5	7.6	-	-	-	-	RNAV1

Path	Waypoint Identifier	Inbound Course °M(°T)	Magnetic Variation	Outbound Time (MIN)	Outbound Distance (NM)	Turn Direction	Minimum Altitude (FT)	Maximum Altitude (FT)	Speed (KIAS)	Navigation Specification
Hold	POLIX	310 (302.3)	-7.5	1.0(-14000) 1.5(+14001)	-	L	11000	-	-230(-14000) -240(+14001)	RNAV1
Hold	GODIN	197 (189.2)	-7.5	1.0(-14000) 1.5(+14001)	-	R	8000	-	-230(-14000) -240(+14001)	RNAV1
Hold	NOVEL	264 (256.4)	-7.5	1.0(-14000) 1.5(+14001)	-	L	5000	-	-230(-14000) -240(+14001)	RNAV1
Hold	SCREW	203 (195.2)	-7.5	1.0(-14000) 1.5(+14001)	-	L	4000	-	-230(-14000) -240(+14001)	RNAV1

CHANGE : Restriction on NOVEL

STANDARD ARRIVAL CHART-INSTRUMENT

RJTT / TOKYO INTL

RNAV STAR RWY22/23

POLIX 1D ARRIVAL

From POLIX at FL150, to GODIN, to NOVEL at or above 8000FT, to DREAD, to DENNY, to DATUM.

Critical DME	-
DME GAP	-
Inappropriate Nav aids	See AD1.1.6.10.3. Inappropriate NAVAIDs for RNAV1

Serial Number	Path Descriptor	Waypoint Identifier	Fly Over	Course °M(°T)	Magnetic Variation	Distance (NM)	Turn Direction	Altitude (FT)	Speed (KIAS)	Vertical Angle	Navigation Specification
001	IF	POLIX	-	-	-7.5	-	-	FL150	-	-	RNAV1
002	TF	GODIN	-	335 (327.2)	-7.5	14.1	-	-	-	-	RNAV1
003	TF	NOVEL	-	264 (256.4)	-7.5	14.0	-	+8000	-	-	RNAV1
004	TF	DREAD	-	191 (183.1)	-7.5	17.2	-	-	-	-	RNAV1
005	TF	DENNY	-	167 (159.9)	-7.5	16.5	-	-	-	-	RNAV1
006	TF	DATUM	-	167 (160.0)	-7.5	5.8	-	-	-	-	RNAV1

Path	Waypoint Identifier	Inbound Course °M(°T)	Magnetic Variation	Outbound Time (MIN)	Outbound Distance (NM)	Turn Direction	Minimum Altitude (FT)	Maximum Altitude (FT)	Speed (KIAS)	Navigation Specification
Hold	POLIX	310 (302.3)	-7.5	1.0(-14000) 1.5(+14001)	-	L	11000	-	-230(-14000) -240(+14001)	RNAV1
Hold	GODIN	197 (189.2)	-7.5	1.0(-14000) 1.5(+14001)	-	R	8000	-	-230(-14000) -240(+14001)	RNAV1
Hold	NOVEL	264 (256.4)	-7.5	1.0(-14000) 1.5(+14001)	-	L	5000	-	-230(-14000) -240(+14001)	RNAV1
Hold	DREAD	191 (183.1)	-7.5	1.0(-14000) 1.5(+14001)	-	R	5000	-	-230(-14000) -240(+14001)	RNAV1
Hold	DENNY	167 (159.9)	-7.5	1.0(-14000) 1.5(+14001)	-	R	4000	-	-230(-14000) -240(+14001)	RNAV1

Waypoint Coordinates

Waypoint Identifier	Coordinates	Waypoint Identifier	Coordinates
DATUM	354259.6N / 1400824.3E	NOVEL	362106.9N / 1400004.9E
DENNY	354828.8N / 1400556.4E	POLIX	361237.1N / 1402622.5E
DREAD	360359.2N / 1395856.9E	SCREW	360301.2N / 1395400.4E
GODIN	362425.3N / 1401655.9E	STEAM	355553.3N / 1395708.4E

CHANGE : Restriction on NOVEL