

STANDARD ARRIVAL CHART-INSTRUMENT

RJTT / TOKYO INTL

RNAV STAR RWY34R/34L

POLIX 2A ARRIVAL / POLIX 2K ARRIVAL POLIX 1C ARRIVAL	RNAV 1
---	--------

Note 1) DME/DME/IRU or GNSS required.
2) RADAR service required.

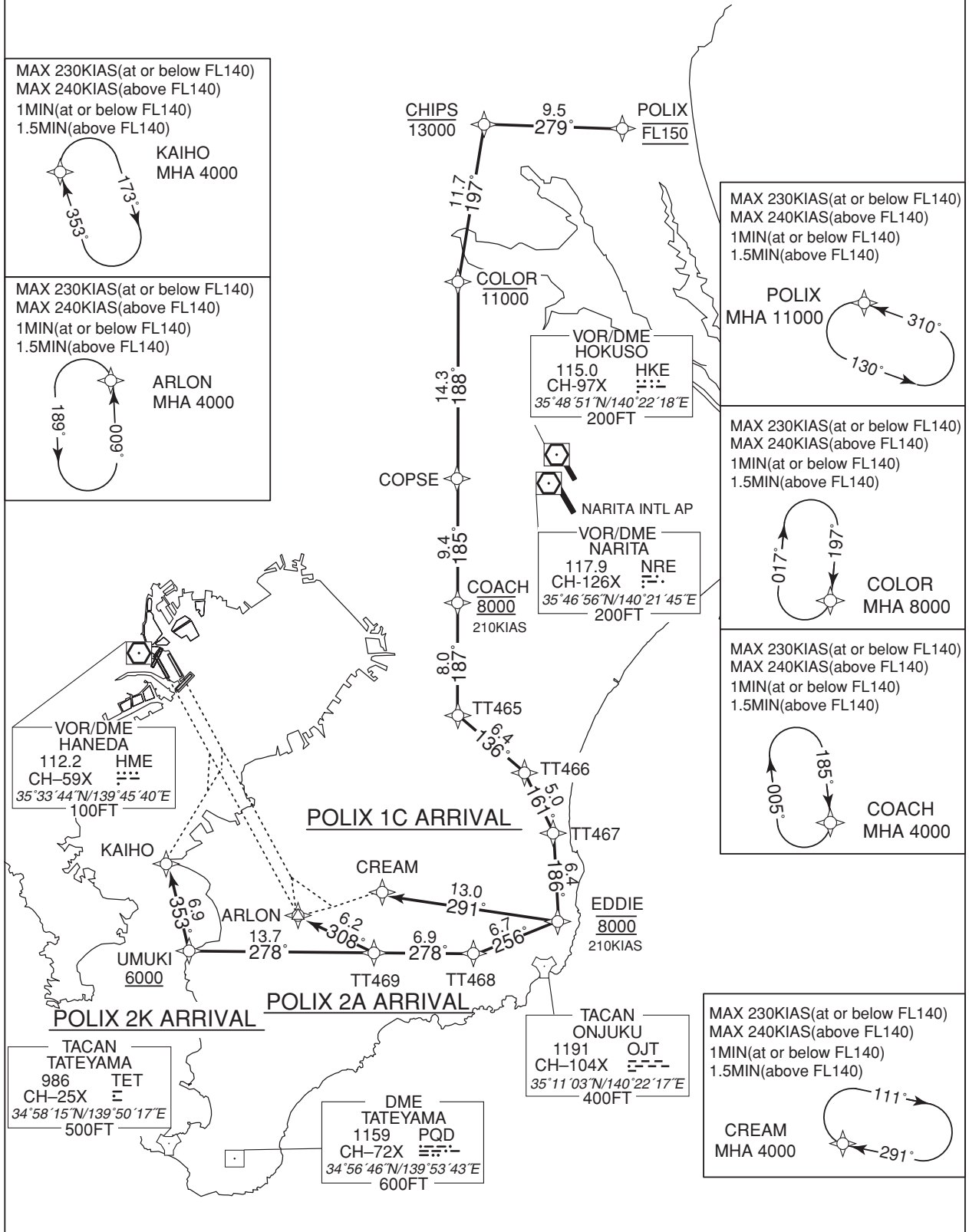
VAR 8° W(2019)

MAX 230KIAS(at or below FL140)
MAX 240KIAS(above FL140)
1MIN(at or below FL140)
1.5MIN(above FL140)

KAIHO
MHA 4000

MAX 230KIAS(at or below FL140)
MAX 240KIAS(above FL140)
1MIN(at or below FL140)
1.5MIN(above FL140)

ARLON
MHA 4000



CHANGE : New PROC

STANDARD ARRIVAL CHART-INSTRUMENT

RJTT / TOKYO INTL

RNAV STAR RWY34R/34L

POLIX 2A ARRIVAL

From POLIX at FL150, to CHIPS at or below 13000FT, to COLOR at or below 11000FT, to COPSE, to COACH at 8000FT, to TT465, to TT466, to TT467, to EDDIE at 8000FT, to TT468, to TT469, to ARLON.

Critical DME	-
DME GAP	-
Inappropriate Nav aids	See AD1.1.6.10.3. Inappropriate NAVAIDs for RNAV1

Serial Number	Path Descriptor	Waypoint Identifier	Fly Over	Course °M(°T)	Magnetic Variation	Distance (NM)	Turn Direction	Altitude (FT)	Speed (KIAS)	Vertical Angle	Navigation Specification
001	IF	POLIX	-	-	-7.5	-	-	FL150	-	-	RNAV1
002	TF	CHIPS	-	279 (271.1)	-7.5	9.5	-	-13000	-	-	RNAV1
003	TF	COLOR	-	197 (189.1)	-7.5	11.7	-	-11000	-	-	RNAV1
004	TF	COPSE	-	188 (180.8)	-7.5	14.3	-	-	-	-	RNAV1
005	TF	COACH	-	185 (177.8)	-7.5	9.4	-	8000	210	-	RNAV1
006	TF	TT465	-	187 (179.6)	-7.5	8.0	-	-	-	-	RNAV1
007	TF	TT466	-	136 (128.9)	-7.5	6.4	-	-	-	-	RNAV1
008	TF	TT467	-	161 (153.5)	-7.5	5.0	-	-	-	-	RNAV1
009	TF	EDDIE	-	186 (178.0)	-7.5	6.4	-	8000	210	-	RNAV1
010	TF	TT468	-	256 (248.1)	-7.5	6.7	-	-	-	-	RNAV1
011	TF	TT469	-	278 (270.2)	-7.5	6.9	-	-	-	-	RNAV1
012	TF	ARLON	-	308 (300.2)	-7.5	6.2	-	-	-	-	RNAV1

Path	Waypoint Identifier	Inbound Course °M(°T)	Magnetic Variation	Outbound Time (MIN)	Outbound Distance (NM)	Turn Direction	Minimum Altitude (FT)	Maximum Altitude (FT)	Speed (KIAS)	Navigation Specification
Hold	POLIX	310 (302.3)	-7.5	1.0(-14000) 1.5(+14001)	-	L	11000	-	-230(-14000) -240(+14001)	RNAV1
Hold	COLOR	197 (189.1)	-7.5	1.0(-14000) 1.5(+14001)	-	R	8000	-	-230(-14000) -240(+14001)	RNAV1
Hold	COACH	185 (177.8)	-7.5	1.0(-14000) 1.5(+14001)	-	R	4000	-	-230(-14000) -240(+14001)	RNAV1
Hold	ARLON	009 (001.6)	-7.5	1.0(-14000) 1.5(+14001)	-	L	4000	-	-230(-14000) -240(+14001)	RNAV1

CHANGE : New PROC

STANDARD ARRIVAL CHART-INSTRUMENT

RJTT / TOKYO INTL

RNAV STAR RWY34R/34L

POLIX 2K ARRIVAL

From POLIX at FL150, to CHIPS at or below 13000FT, to COLOR at or below 11000FT, to COPSE, to COACH at 8000FT, to TT465, to TT466, to TT467, to EDDIE at 8000FT, to TT468, to TT469, to UMUKI at or above 6000FT, to KAIHO.

Critical DME	-
DME GAP	-
Inappropriate NavAids	See AD1.1.6.10.3. Inappropriate NAVAIDs for RNAV1

Serial Number	Path Descriptor	Waypoint Identifier	Fly Over	Course °M(°T)	Magnetic Variation	Distance (NM)	Turn Direction	Altitude (FT)	Speed (KIAS)	Vertical Angle	Navigation Specification
001	IF	POLIX	-	-	-7.5	-	-	FL150	-	-	RNAV1
002	TF	CHIPS	-	279 (271.1)	-7.5	9.5	-	-13000	-	-	RNAV1
003	TF	COLOR	-	197 (189.1)	-7.5	11.7	-	-11000	-	-	RNAV1
004	TF	COPSE	-	188 (180.8)	-7.5	14.3	-	-	-	-	RNAV1
005	TF	COACH	-	185 (177.8)	-7.5	9.4	-	8000	210	-	RNAV1
006	TF	TT465	-	187 (179.6)	-7.5	8.0	-	-	-	-	RNAV1
007	TF	TT466	-	136 (128.9)	-7.5	6.4	-	-	-	-	RNAV1
008	TF	TT467	-	161 (153.5)	-7.5	5.0	-	-	-	-	RNAV1
009	TF	EDDIE	-	186 (178.0)	-7.5	6.4	-	8000	210	-	RNAV1
010	TF	TT468	-	256 (248.1)	-7.5	6.7	-	-	-	-	RNAV1
011	TF	TT469	-	278 (270.2)	-7.5	6.9	-	-	-	-	RNAV1
012	TF	UMUKI	-	278 (270.2)	-7.5	13.7	-	+6000	-	-	RNAV1
013	TF	KAIHO	-	353 (345.5)	-7.5	6.9	-	-	-	-	RNAV1

Path	Waypoint Identifier	Inbound Course °M(°T)	Magnetic Variation	Outbound Time (MIN)	Outbound Distance (NM)	Turn Direction	Minimum Altitude (FT)	Maximum Altitude (FT)	Speed (KIAS)	Navigation Specification
Hold	POLIX	310 (302.3)	-7.5	1.0(-14000) 1.5(+14001)	-	L	11000	-	-230(-14000) -240(+14001)	RNAV1
Hold	COLOR	197 (189.1)	-7.5	1.0(-14000) 1.5(+14001)	-	R	8000	-	-230(-14000) -240(+14001)	RNAV1
Hold	COACH	185 (177.8)	-7.5	1.0(-14000) 1.5(+14001)	-	R	4000	-	-230(-14000) -240(+14001)	RNAV1
Hold	KAIHO	353 (345.5)	-7.5	1.0(-14000) 1.5(+14001)	-	R	4000	-	-230(-14000) -240(+14001)	RNAV1

CHANGE : New PROC

STANDARD ARRIVAL CHART-INSTRUMENT

RJTT / TOKYO INTL

RNAV STAR RWY34R/34L

POLIX 1C ARRIVAL

From POLIX at FL150, to CHIPS at or below 13000FT, to COLOR at or below 11000FT, to COPSE, to COACH at 8000FT, to TT465, to TT466, to TT467, to EDDIE at 8000FT, to CREAM.

Critical DME	-
DME GAP	-
Inappropriate Nav aids	See AD1.1.6.10.3. Inappropriate NAVAIDs for RNAV1

Serial Number	Path Descriptor	Waypoint Identifier	Fly Over	Course °M(°T)	Magnetic Variation	Distance (NM)	Turn Direction	Altitude (FT)	Speed (KIAS)	Vertical Angle	Navigation Specification
001	IF	POLIX	-	-	-7.5	-	-	FL150	-	-	RNAV1
002	TF	CHIPS	-	279 (271.1)	-7.5	9.5	-	-13000	-	-	RNAV1
003	TF	COLOR	-	197 (189.1)	-7.5	11.7	-	-11000	-	-	RNAV1
004	TF	COPSE	-	188 (180.8)	-7.5	14.3	-	-	-	-	RNAV1
005	TF	COACH	-	185 (177.8)	-7.5	9.4	-	8000	210	-	RNAV1
006	TF	TT465	-	187 (179.6)	-7.5	8.0	-	-	-	-	RNAV1
007	TF	TT466	-	136 (128.9)	-7.5	6.4	-	-	-	-	RNAV1
008	TF	TT467	-	161 (153.5)	-7.5	5.0	-	-	-	-	RNAV1
009	TF	EDDIE	-	186 (178.0)	-7.5	6.4	-	8000	210	-	RNAV1
010	TF	CREAM	-	291 (283.1)	-7.5	13.0	-	-	-	-	RNAV1

Path	Waypoint Identifier	Inbound Course °M(°T)	Magnetic Variation	Outbound Time (MIN)	Outbound Distance (NM)	Turn Direction	Minimum Altitude (FT)	Maximum Altitude (FT)	Speed (KIAS)	Navigation Specification
Hold	POLIX	310 (302.3)	-7.5	1.0(-14000) 1.5(+14001)	-	L	11000	-	-230(-14000) -240(+14001)	RNAV1
Hold	COLOR	197 (189.1)	-7.5	1.0(-14000) 1.5(+14001)	-	R	8000	-	-230(-14000) -240(+14001)	RNAV1
Hold	COACH	185 (177.8)	-7.5	1.0(-14000) 1.5(+14001)	-	R	4000	-	-230(-14000) -240(+14001)	RNAV1
Hold	CREAM	291 (283.1)	-7.5	1.0(-14000) 1.5(+14001)	-	R	4000	-	-230(-14000) -240(+14001)	RNAV1

Waypoint Coordinates

Waypoint Identifier	Coordinates	Waypoint Identifier	Coordinates
ARLON	351525.3N / 1395859.8E	POLIX	361237.1N / 1402622.5E
CHIPS	361247.7N / 1401436.9E	TT465	352939.2N / 1401235.4E
COACH	353736.0N / 1401231.5E	TT466	352539.0N / 1401840.1E
COLOR	360116.3N / 1401219.8E	TT467	352110.2N / 1402124.4E
COPSE	354658.8N / 1401205.4E	TT468	351216.4N / 1401402.6E
CREAM	351743.4N / 1400612.4E	TT469	351217.9N / 1400534.7E
EDDIE	351447.4N / 1402140.9E	UMUKI	351219.1N / 1394849.2E
KAIHO	351857.8N / 1394642.4E		

CHANGE : New PROC