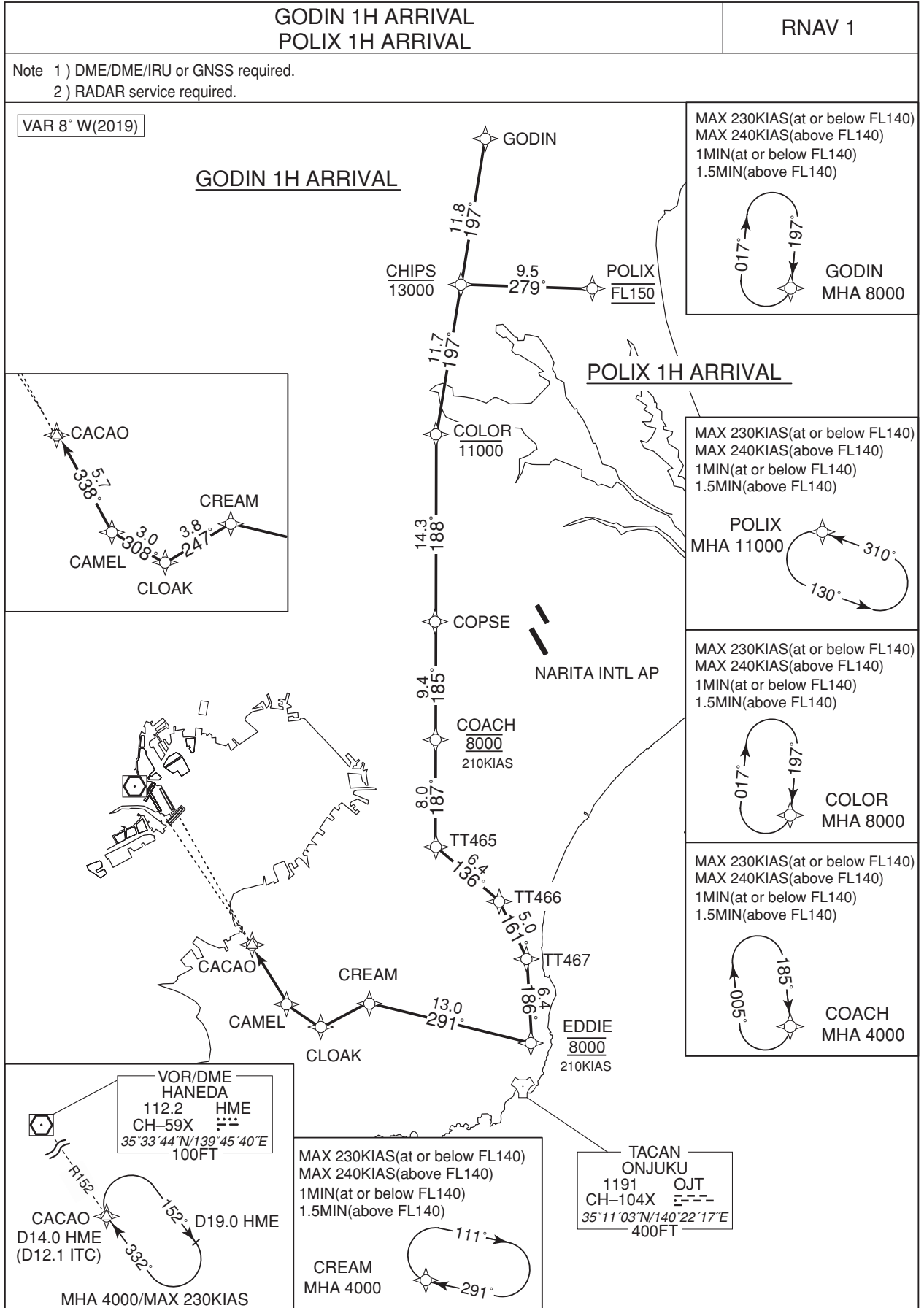


STANDARD ARRIVAL CHART-INSTRUMENT

RJTT / TOKYO INTL

RNAV STAR RWY34R/34L



STANDARD ARRIVAL CHART-INSTRUMENT

RJTT / TOKYO INTL

RNAV STAR RWY34R/34L

GODIN 1H ARRIVAL

From GODIN, to CHIPS at or below 13000FT, to COLOR at or below 11000FT, to COPSE, to COACH at 8000FT, to TT465, to TT466, to TT467, to EDDIE at 8000FT, to CREAM, to CLOAK, to CAMEL, to CACAO.

Critical DME	-
DME GAP	-
Inappropriate Nav aids	See AD1.1.6.10.3. Inappropriate NAVAIDs for RNAV1

Serial Number	Path Descriptor	Waypoint Identifier	Fly Over	Course °M(°T)	Magnetic Variation	Distance (NM)	Turn Direction	Altitude (FT)	Speed (KIAS)	Vertical Angle	Navigation Specification
001	IF	GODIN	-	-	-7.5	-	-	-	-	-	RNAV1
002	TF	CHIPS	-	197 (189.1)	-7.5	11.8	-	-13000	-	-	RNAV1
003	TF	COLOR	-	197 (189.1)	-7.5	11.7	-	-11000	-	-	RNAV1
004	TF	COPSE	-	188 (180.8)	-7.5	14.3	-	-	-	-	RNAV1
005	TF	COACH	-	185 (177.8)	-7.5	9.4	-	8000	210	-	RNAV1
006	TF	TT465	-	187 (179.6)	-7.5	8.0	-	-	-	-	RNAV1
007	TF	TT466	-	136 (128.9)	-7.5	6.4	-	-	-	-	RNAV1
008	TF	TT467	-	161 (153.5)	-7.5	5.0	-	-	-	-	RNAV1
009	TF	EDDIE	-	186 (178.0)	-7.5	6.4	-	8000	210	-	RNAV1
010	TF	CREAM	-	291 (283.1)	-7.5	13.0	-	-	-	-	RNAV1
011	TF	CLOAK	-	247 (240.0)	-7.5	3.8	-	-	-	-	RNAV1
012	TF	CAMEL	-	308 (300.1)	-7.5	3.0	-	-	-	-	RNAV1
013	TF	CACAO	-	338 (330.1)	-7.5	5.7	-	-	-	-	RNAV1

Path	Waypoint Identifier	Inbound Course °M(°T)	Magnetic Variation	Outbound Time (MIN)	Outbound Distance (NM)	Turn Direction	Minimum Altitude (FT)	Maximum Altitude (FT)	Speed (KIAS)	Navigation Specification
Hold	GODIN	197 (189.2)	-7.5	1.0(-14000) 1.5(+14001)	-	R	8000	-	-230(-14000) -240(+14001)	RNAV1
Hold	COLOR	197 (189.1)	-7.5	1.0(-14000) 1.5(+14001)	-	R	8000	-	-230(-14000) -240(+14001)	RNAV1
Hold	COACH	185 (177.8)	-7.5	1.0(-14000) 1.5(+14001)	-	R	4000	-	-230(-14000) -240(+14001)	RNAV1
Hold	CREAM	291 (283.1)	-7.5	1.0(-14000) 1.5(+14001)	-	R	4000	-	-230(-14000) -240(+14001)	RNAV1

CHANGE : New PROC

STANDARD ARRIVAL CHART-INSTRUMENT

RJTT / TOKYO INTL

RNAV STAR RWY34R/34L

POLIX 1H ARRIVAL

From POLIX at FL150, to CHIPS at or below 13000FT, to COLOR at or below 11000FT, to COPSE, to COACH at 8000FT, to TT465, to TT466, to TT467, to EDDIE at 8000FT, to CREAM, to CLOAK, to CAMEL, to CACAO.

Critical DME	-
DME GAP	-
Inappropriate Navaids	See AD1.1.6.10.3. Inappropriate NAVAIDs for RNAV1

Serial Number	Path Descriptor	Waypoint Identifier	Fly Over	Course °M(°T)	Magnetic Variation	Distance (NM)	Turn Direction	Altitude (FT)	Speed (KIAS)	Vertical Angle	Navigation Specification
001	IF	POLIX	-	-	-7.5	-	-	FL150	-	-	RNAV1
002	TF	CHIPS	-	279 (271.1)	-7.5	9.5	-	-13000	-	-	RNAV1
003	TF	COLOR	-	197 (189.1)	-7.5	11.7	-	-11000	-	-	RNAV1
004	TF	COPSE	-	188 (180.8)	-7.5	14.3	-	-	-	-	RNAV1
005	TF	COACH	-	185 (177.8)	-7.5	9.4	-	8000	210	-	RNAV1
006	TF	TT465	-	187 (179.6)	-7.5	8.0	-	-	-	-	RNAV1
007	TF	TT466	-	136 (128.9)	-7.5	6.4	-	-	-	-	RNAV1
008	TF	TT467	-	161 (153.5)	-7.5	5.0	-	-	-	-	RNAV1
009	TF	EDDIE	-	186 (178.0)	-7.5	6.4	-	8000	210	-	RNAV1
010	TF	CREAM	-	291 (283.1)	-7.5	13.0	-	-	-	-	RNAV1
011	TF	CLOAK	-	247 (240.0)	-7.5	3.8	-	-	-	-	RNAV1
012	TF	CAMEL	-	308 (300.1)	-7.5	3.0	-	-	-	-	RNAV1
013	TF	CACAO	-	338 (330.1)	-7.5	5.7	-	-	-	-	RNAV1

Path	Waypoint Identifier	Inbound Course °M(°T)	Magnetic Variation	Outbound Time (MIN)	Outbound Distance (NM)	Turn Direction	Minimum Altitude (FT)	Maximum Altitude (FT)	Speed (KIAS)	Navigation Specification
Hold	POLIX	310 (302.3)	-7.5	1.0(-14000) 1.5(+14001)	-	L	11000	-	-230(-14000) -240(+14001)	RNAV1
Hold	COLOR	197 (189.1)	-7.5	1.0(-14000) 1.5(+14001)	-	R	8000	-	-230(-14000) -240(+14001)	RNAV1
Hold	COACH	185 (177.8)	-7.5	1.0(-14000) 1.5(+14001)	-	R	4000	-	-230(-14000) -240(+14001)	RNAV1
Hold	CREAM	291 (283.1)	-7.5	1.0(-14000) 1.5(+14001)	-	R	4000	-	-230(-14000) -240(+14001)	RNAV1

CHANGE : New PROC

STANDARD ARRIVAL CHART-INSTRUMENT

RJTT / TOKYO INTL

RNAV STAR RWY34R/34L

Waypoint Coordinates

Waypoint Identifier	Coordinates	Waypoint Identifier	Coordinates
CACAO	352212.8N / 1395530.1E	CREAM	351743.4N / 1400612.4E
CAMEL	351718.2N / 1395857.8E	EDDIE	351447.4N / 1402140.9E
CHIPS	361247.7N / 1401436.9E	GODIN	362425.3N / 1401655.9E
CLOAK	351548.0N / 1400208.2E	POLIX	361237.1N / 1402622.5E
COACH	353736.0N / 1401231.5E	TT465	352939.2N / 1401235.4E
COLOR	360116.3N / 1401219.8E	TT466	352539.0N / 1401840.1E
COPSE	354658.8N / 1401205.4E	TT467	352110.2N / 1402124.4E

CHANGE : New PROC